



# MacBook Unibody Model A1278 Optical Drive Replacement

Written By: Walter Galan



## INTRODUCTION

This guide will show you how to replace the SuperDrive from your laptop (requires a SATA SuperDrive).



### TOOLS:

- [Phillips #00 Screwdriver](#) (1)
- [Spudger](#) (1)



### PARTS:

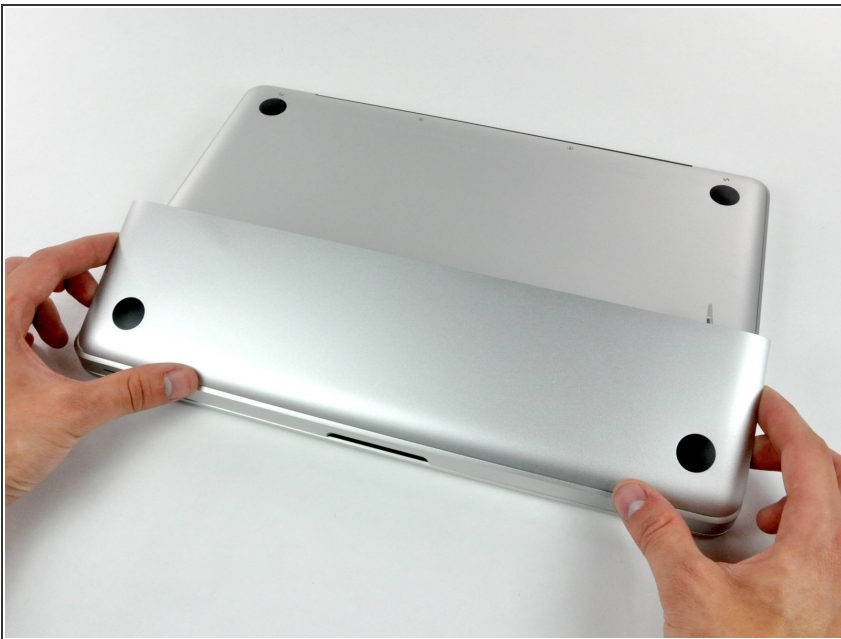
- [MacBook Unibody \(Model No. A1278\) 8x SATA SuperDrive \(Used\)](#) (1)
- [MacBook Unibody \(Model No. A1278\) SATA SuperDrive Cable](#) (1)
- [SATA USB Adapter](#) (1)
- [Unibody 8x SATA SuperDrive \(Pre-Mid 2009\)](#) (1)

## Step 1 — Access Door



- With the case closed, place the Unibody top-side down on a flat surface.
- Depress the grooved side of the access door release latch enough to grab the free end. Lift the release latch until it is vertical.

## Step 2



- The access door should now be raised enough to lift it up and out of the Unibody.

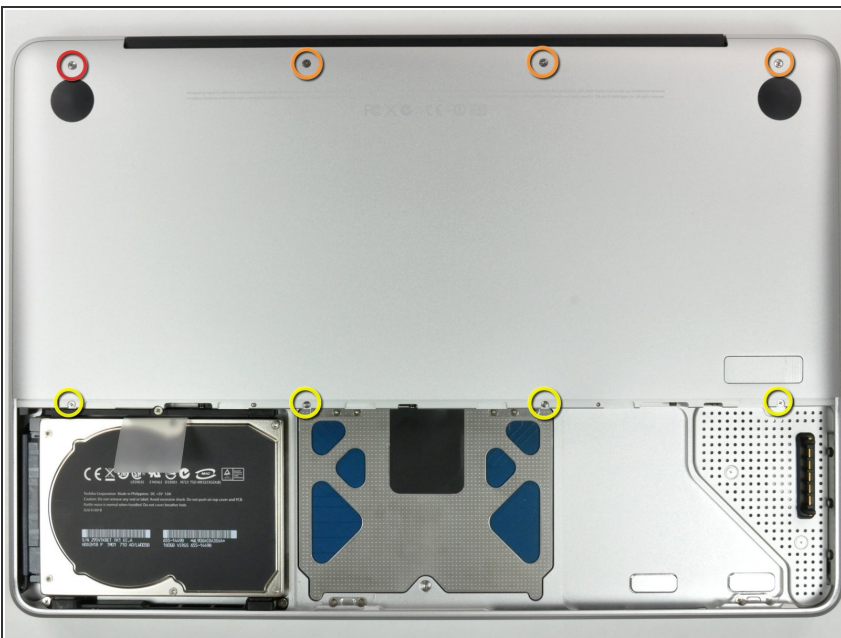


## Step 3 — Battery



- ⓘ Be sure the access door release latch is vertical before proceeding.
- Grab the white plastic tab and pull the battery up and out of the Unibody.

## Step 4 — Lower Case



- Remove the following eight screws securing the lower case to the chassis:
  - One 3 mm Phillips screw.
  - Three 13.5 mm Phillips screws.
  - Four 3.5 mm Phillips screws.

## Step 5



- Using both hands, lift and remove the lower case off the upper case.

## Step 6 — Optical Drive



- Using the flat end of a spudger, pry the subwoofer connector straight up off the logic board.

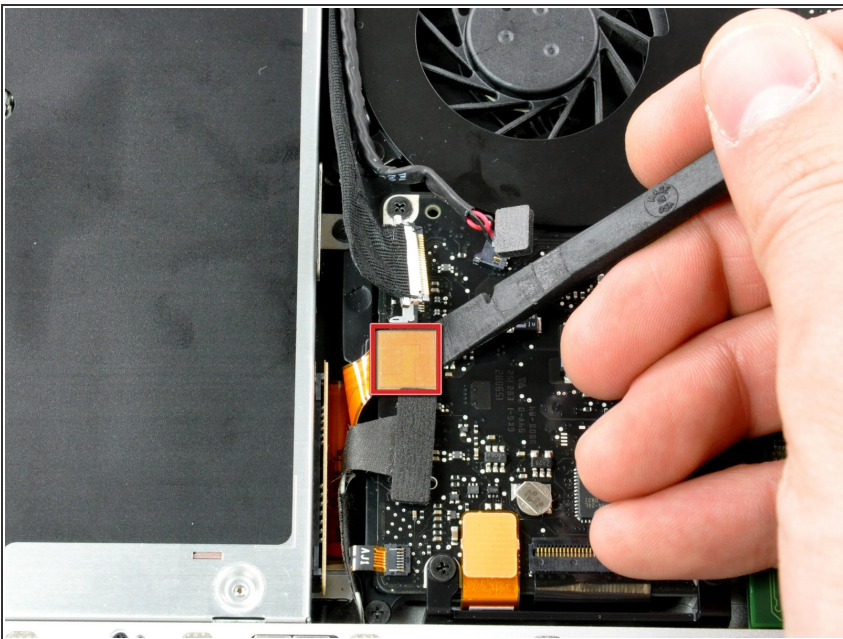


## Step 7



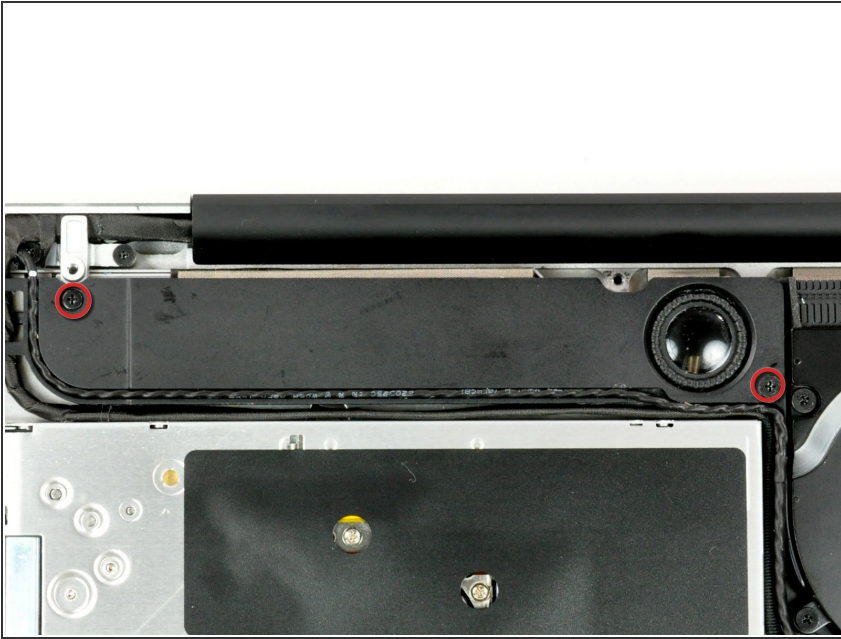
- Disconnect the camera cable by pulling the male end straight away from its socket.

## Step 8



- Use a spudger to pry the optical drive connector straight up off the logic board.

## Step 9



- Remove the two Phillips screws securing the subwoofer to the upper case.
- ⓘ The longer of the two screws is on the right.

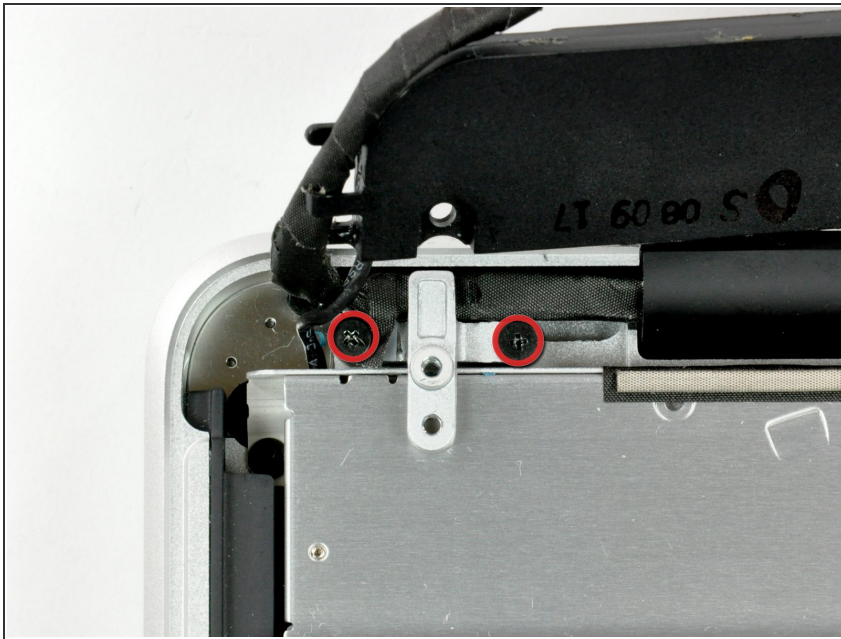
## Step 10



- ⓘ The subwoofer is still connected to the right speaker, so don't completely remove it just yet.
- Lift the subwoofer off the optical drive, and set it above the computer.

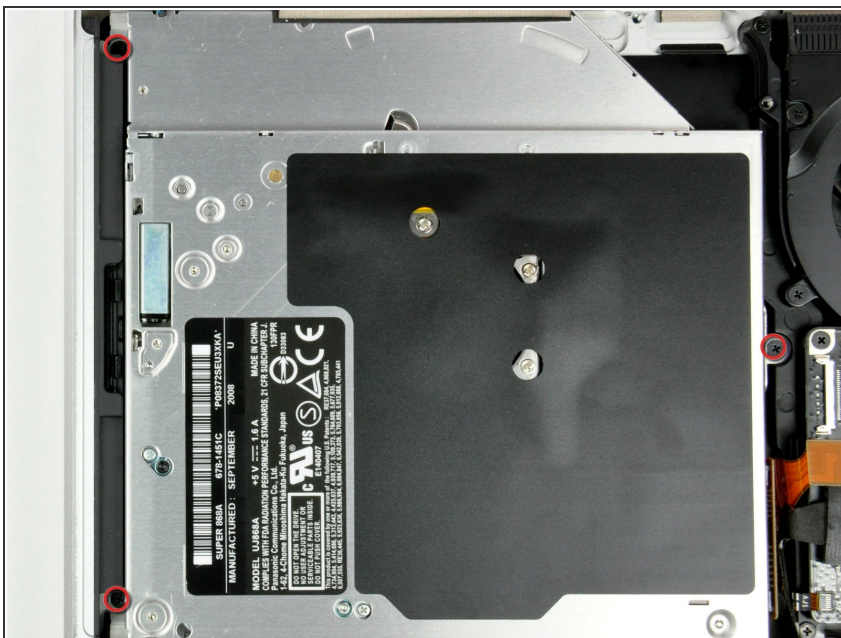


## Step 11



- Remove the two Phillips screws securing the camera cable bracket to the upper case.
- ⓘ The leftmost screw may remain captive in the camera cable.

## Step 12



- Remove the three 2.5 mm Phillips screws securing the optical drive to the upper case.



## Step 13



- Lift the optical drive from its right edge and pull it out of the computer.

★ The hard drive cable may become disconnected from the logic board when removing the optical drive. Ensure it is connected during reassembly.

## Step 14 — Optical Drive



- Remove the optical drive cable by pulling it straight away from the optical drive.

i This connector is particularly deep, so be sure to pull away from the drive at the center of the connector.

i If you have a CD or any other object jammed in your optical drive, we have an [optical drive repair guide](#).

## Step 15



- Remove the two black Phillips #0 screws securing the small metal mounting bracket. Transfer this bracket to your new optical drive or [hard drive enclosure](#).

To reassemble your device, follow these instructions in reverse order.